



# CERTIFICATE OF COMPLIANCE (Scope Certificate)

Registration No: GCL-4GR3355

GCL INTERNATIONAL LTD declares that

[Redacted]  
[Redacted] **Tamil Nadu, India.**

has been inspected and assessed according to the

## Global Recycled Standard (GRS) - Version 4.0 -

and that products of the categories as mentioned below (and further specified in the annex) comply with this standard:

Product categories: **Accessories, Home Textiles & Yarns**

Processing steps / activities carried out under responsibility of the above mentioned company (by the operations as detailed in the annex) for the certified products:

**Exporting, Manufacturing, Storing, Trading and Weaving**

This Certificate is valid until: 30-March-2021

Place and Date of Issue  
London, 15-May-2020

Stamp of the issuing body

GRS Logo



Name of the authorized person:  
Gary Jones, Chief Executive Officer  
GCL International Ltd

This Certificate of Compliance provides no proof that any goods delivered by its holder are GRS certified. Proof of GRS certification of goods delivered is provided by a valid Transaction Certificate (TC) covering them.

The issuing body can withdraw this certificate before it expires if the declared compliance is no longer guaranteed.

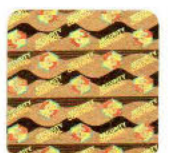
Accredited/Licensed by: International Organic Accreditation Services (IOAS), Contract No: 125



This Certificate remains the property of GCL International Ltd.  
The Registration is subject to the Scheme Rules which are published at [www.gcl-intl.com](http://www.gcl-intl.com). Any misuse, alteration, forgery or falsification is an unlawful act.  
Please validate the authenticity of this certificate by visiting [www.gcl-intl.com](http://www.gcl-intl.com)  
**GCL INTERNATIONAL LTD.**

Level 1, Devonshire House, One Mayfair Place, London, W1 J 8AJ, United Kingdom.

Compliance Certificate of, page 1 of 3



S/N : 60002799

PIN : 44152208





Annex to certificate no: GCL-3355/GRS- [REDACTED]

Global Recycled Standard (GRS)

In specific the certificate covers the following products:

Name of product	Material composition	Product code
Bags - 50% Pre-consumer Recycled Cotton + 50% Post-consumer Recycled Polyester	50% Pre-consumer Recycled Cotton + 50% Post-consumer Recycled Polyester	Pre-consumer & Post-consumer
Bags - 60% Pre-consumer Recycled Cotton + 40% Post-consumer Recycled Polyester	60% Pre-consumer Recycled Cotton + 40% Post-consumer Recycled Polyester	Pre-consumer & Post-consumer
Bags - 70% Pre-consumer Recycled Cotton + 30% Post-consumer Recycled Polyester	70% Pre-consumer Recycled Cotton + 30% Post-consumer Recycled Polyester	Pre-consumer & Post-consumer
Bags - 80% Pre-consumer Recycled Cotton + 20% Post-consumer Recycled Polyester	80% Pre-consumer Recycled Cotton + 20% Post-consumer Recycled Polyester	Pre-consumer & Post-consumer
Blankets - 100% Post-consumer Recycled Polyester	100% Post-consumer Recycled Polyester	Post-consumer
Blankets - 60% Pre-consumer Recycled Cotton + 40% Post-consumer Recycled Polyester	60% Pre-consumer Recycled Cotton + 40% Post-consumer Recycled Polyester	Pre-consumer & Post-consumer
Blankets - 80% Pre-consumer Recycled Cotton + 20% Post-consumer Recycled Polyester	80% Pre-consumer Recycled Cotton + 20% Post-consumer Recycled Polyester	Pre-consumer & Post-consumer
Duvets - 100% Post-consumer Recycled Polyester	100% Post-consumer Recycled Polyester	Post-consumer
Grey woven fabrics - 100% Post-consumer Recycled Polyester	100% Post-consumer Recycled Polyester	Post-consumer
Shams - 100% Post-consumer Recycled Polyester	100% Post-consumer Recycled Polyester	Post-consumer
Towels - 100% Post-consumer Recycled Polyester	100% Post-consumer Recycled Polyester	Post-consumer
Towels - 50% Pre-consumer Recycled Cotton + 50% Post-consumer Recycled Polyester	50% Pre-consumer Recycled Cotton + 50% Post-consumer Recycled Polyester	Pre-consumer & Post-consumer
Towels - 60% Pre-consumer Recycled Cotton + 40% Post-consumer Recycled Polyester	60% Pre-consumer Recycled Cotton + 40% Post-consumer Recycled Polyester	Pre-consumer & Post-consumer
Towels - 80% Pre-consumer Recycled Cotton + 20% Post-consumer Recycled Polyester	80% Pre-consumer Recycled Cotton + 20% Post-consumer Recycled Polyester	Pre-consumer & Post-consumer
Woven bags - 100% Post-consumer Recycled Polyester	100% Post-consumer Recycled Polyester	Post-consumer
Yarns - 100% Post-consumer Recycled Polyester	100% Post-consumer Recycled Polyester	Post-consumer

Place and Date of Issue  
London, 15-May-2020

Stamp of the issuing body

GRS Logo

*G Jones*



Name of the authorized person:  
Gary Jones, Chief Executive Officer  
GCL International Ltd

This Certificate remains the property of GCL International Ltd.  
The Registration is subject to the Scheme Rules which are published at [www.gcl-intl.com](http://www.gcl-intl.com). Any misuse, alteration, forgery or falsification is an unlawful act.  
Please validate the authenticity of this certificate by visiting [www.gcl-intl.com](http://www.gcl-intl.com)  
**GCL INTERNATIONAL LTD.**

Compliance Certificate of, page 2 of 3

Level 1, Devonshire House, One Mayfair Place, London, W1 J 8AJ, United Kingdom.



S/N : 60002798  
PIN : 69803778





Annex to certificate no: GCL-3355/GRS-  
 Global Recycled Standard (GRS)

Under the scope of this certificate the following facilities / subcontractors have been inspected and assessed. The listed processing steps/activities comply with the corresponding criteria of the Global Recycled Standard (GRS) for the certified products:

Name and address of operation	Processing steps / activities
<div style="background-color: black; width: 100%; height: 40px; margin-bottom: 5px;"></div> <b>Tamil Nadu. India.</b>	<b>Exporting, Manufacturing Storing, Trading and Weaving</b>

Place and Date of Issue  
 London, 15-May-2020

Stamp of the issuing body

GRS Logo

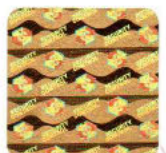
*G Jones*



Name of the authorized person:  
 Gary Jones, Chief Executive Officer  
 GCL International Ltd

This Certificate remains the property of GCL International Ltd.  
 The Registration is subject to the Scheme Rules which are published at [www.gcl-intl.com](http://www.gcl-intl.com). Any misuse, alteration, forgery or falsification is an unlawful act.  
 Please validate the authenticity of this certificate by visiting [www.gcl-intl.com](http://www.gcl-intl.com)  
**GCL INTERNATIONAL LTD.**  
 Level 1, Devonshire House, One Mayfair Place, London, W1J 8AJ, United Kingdom.

Compliance Certificate of, page 3 of 3



S/N : 60002797  
 PIN : 76844191